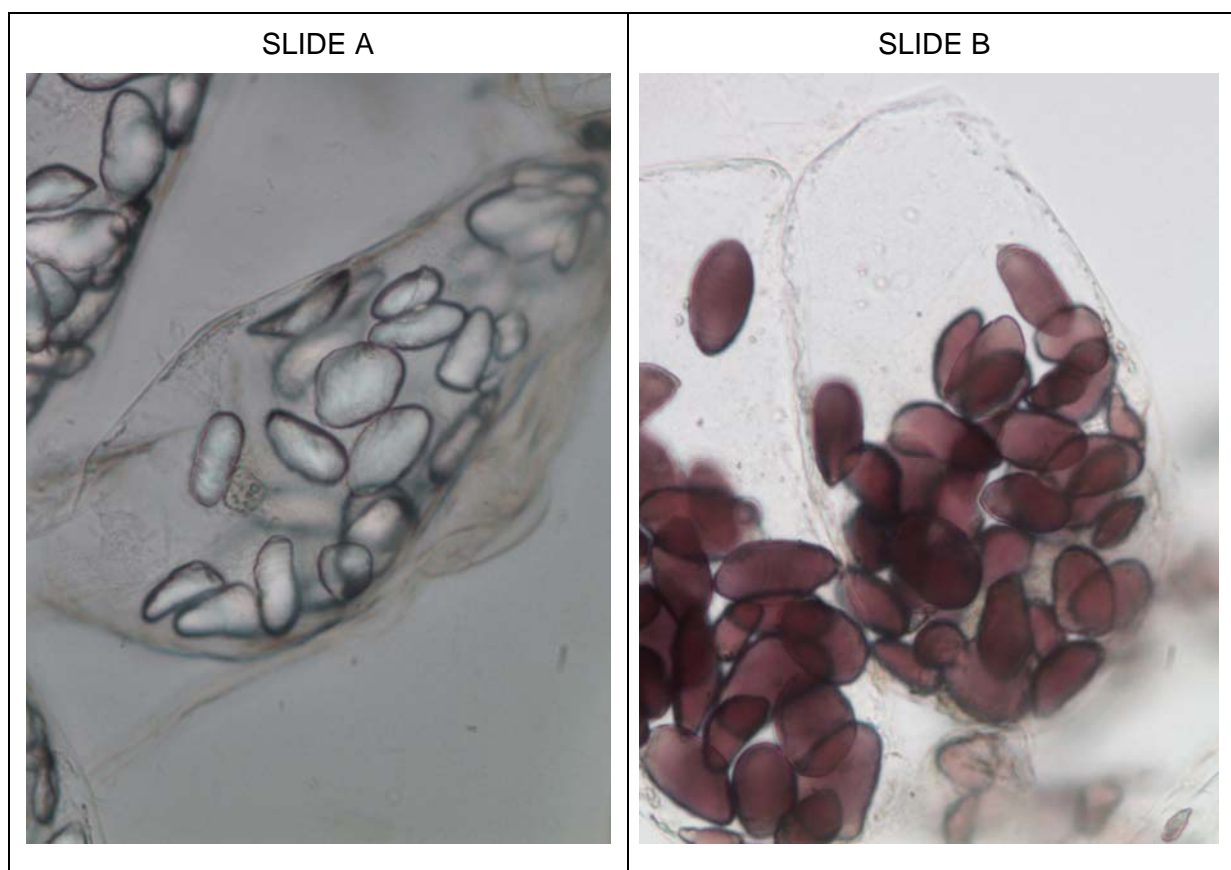


CELLS ONLINE WORKSHEET

TOPIC

BANANA CELLS AND IODINE

Banana cells store excess glucose as starch. The starch collects in banana cells as granules. Iodine stain enables starch to be identified by turning it a purple colour. The following two photographs show banana cells on microscope slides, with and without iodine, viewed under the light microscope at 400x magnification.



Download this page, place in your notebook and answer the following questions.

Q1: On the photographs, identify and label the following structures: cell wall, cytoplasm, starch granule and nucleus (visible in one cell).

Q2: Which slide shows banana cells with iodine stain? **Slide A** or **Slide B**

Q3: What is the advantage of using stains when viewing cells under the microscope?

Q4: What evidence is there that these cells are eukaryotic cells?