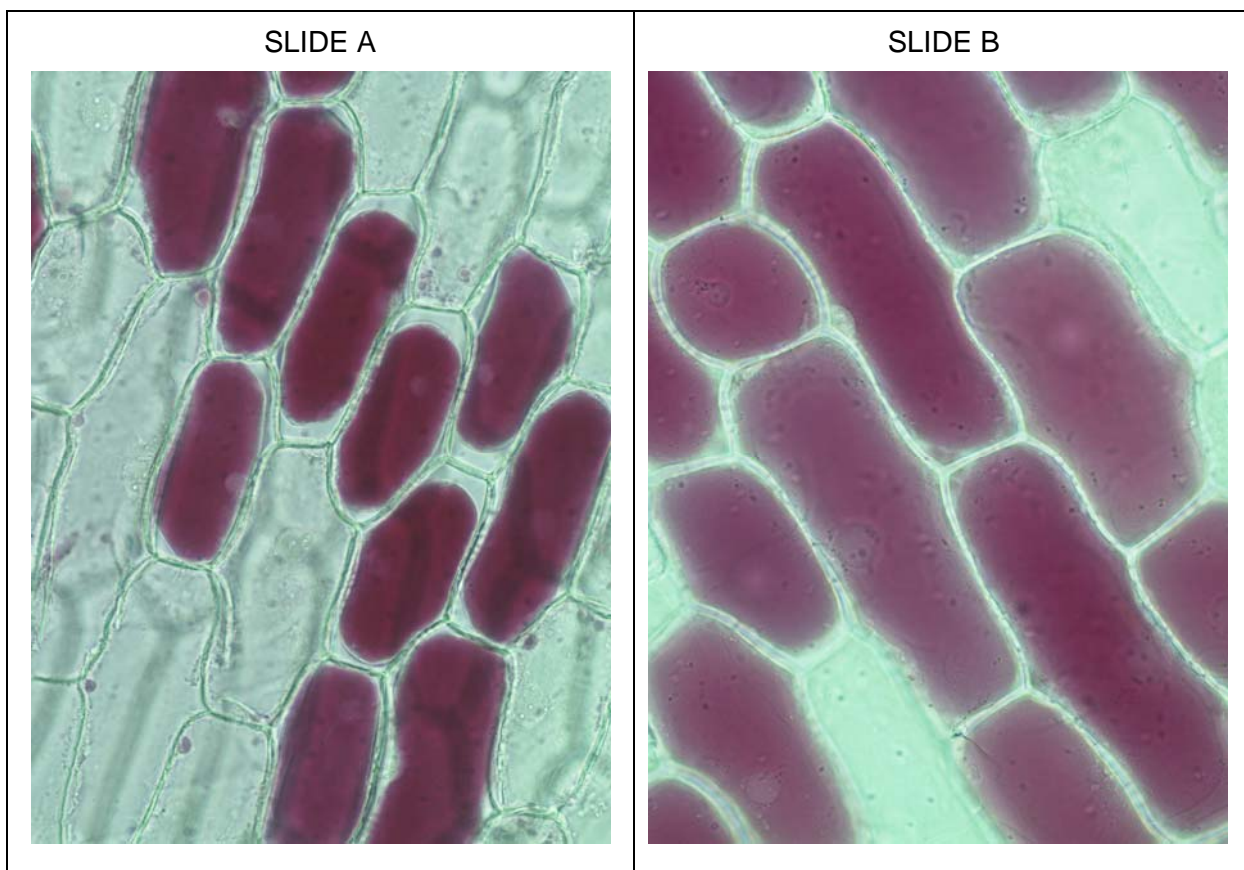


CELLS ONLINE WORKSHEET

TOPIC

RED ONION CELLS IN WATER OR SUCROSE SOLUTION

These cells are from an epidermal layer of red onion. Some of the cells in this cell layer contain a red pigment. Cells on one slide were placed in water, and in a solution with high sucrose concentration on the other slide. Cells were viewed with the light microscope at 200x magnification.



Download this page, place in your notebook and answer the following questions.

Q1: Describe three differences between the cells in Slides A and B.

Q2: Which slide has the cells in the sucrose solution? Slide A or Slide B?.

Q3: Explain your answer to Q2.

Q4: Which part of the cell contains the red pigment?