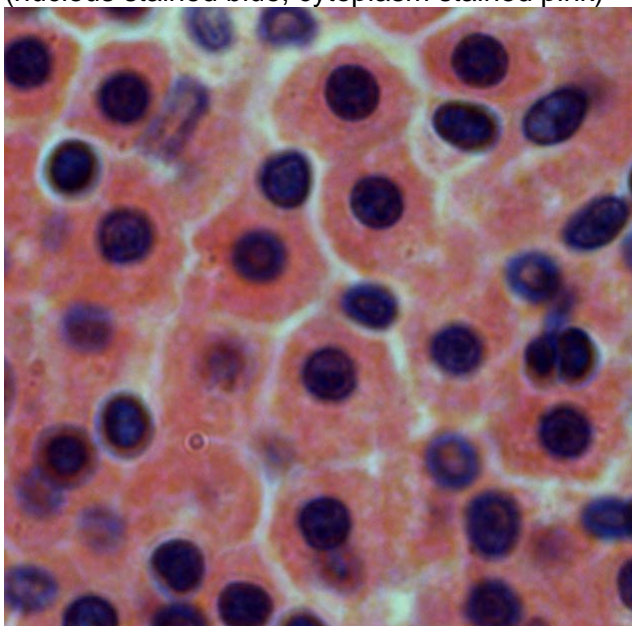


	<h1>CELLS ONLINE WORKSHEET</h1>
<b>TOPIC</b>	<b>CELL SIZE</b>

Cells in different tissues and organisms range widely in size. The three cell types shown below were photographed at 1000x magnification using oil immersion microscopy. First, look carefully at the photos to recognise the individual cells. Then use the scale bars to measure the size of each cell type and record the size in micrometers ( $\mu\text{m}$ ) beneath each photo.

**Mouse LIVER**

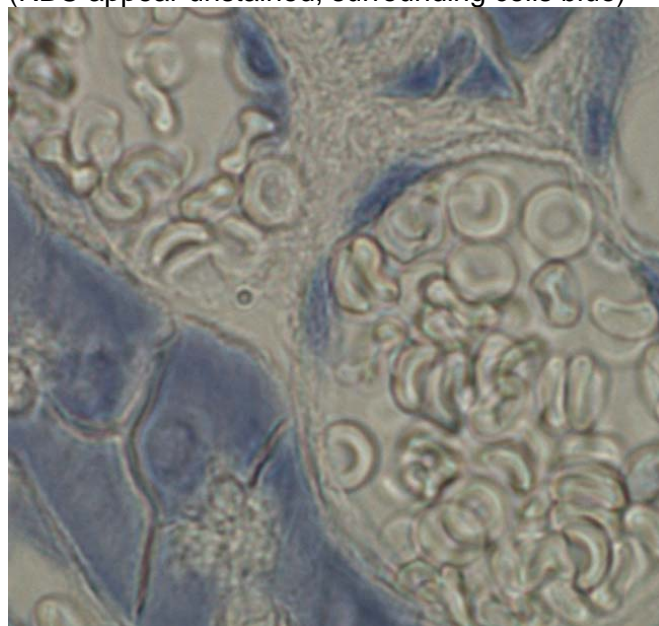
(nucleus stained blue, cytoplasm stained pink)



Cell size :

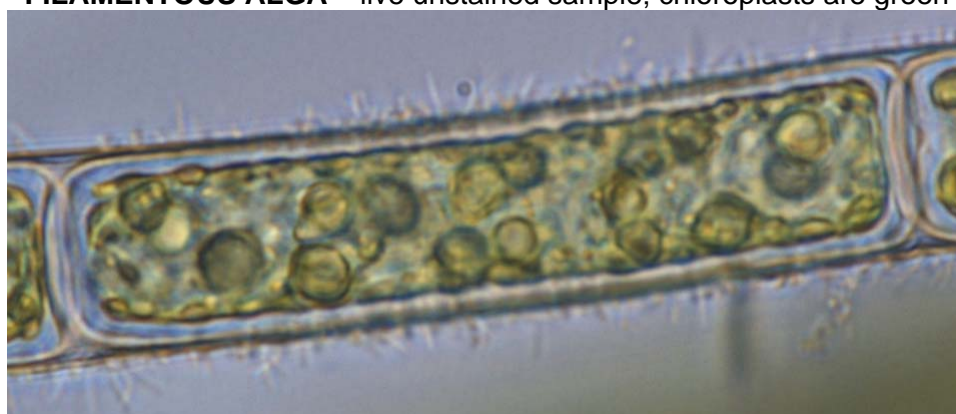
**Mouse RED BLOOD CELLS**

(RBC appear unstained, surrounding cells blue)




Cell size:


**FILAMENTOUS ALGA** – live unstained sample; chloroplasts are green



Cell size:

**SCALE BARS**

  
10 $\mu\text{m}$

  
50 $\mu\text{m}$

**Download this page, place in your notebook**

These images were taken using GTAC's Nikon TE2000-U Microscope