

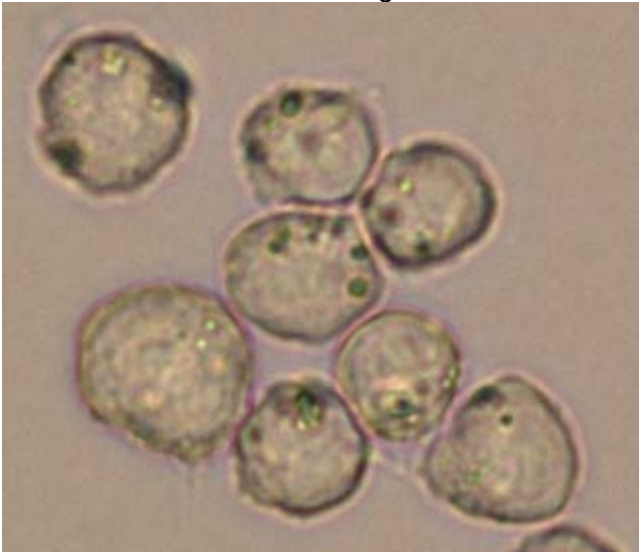
# CELLS ONLINE WORKSHEET

**TOPIC**

**CELL SIZE 2**

Cell size in different tissues and organisms varies widely. The photos below show different cell types photographed at different magnifications. Each photo has a scale bar adjusted for the magnification. A scale bar is a line that represents a set distance. Use the scale bar for each photo to measure the sizes of the cells.

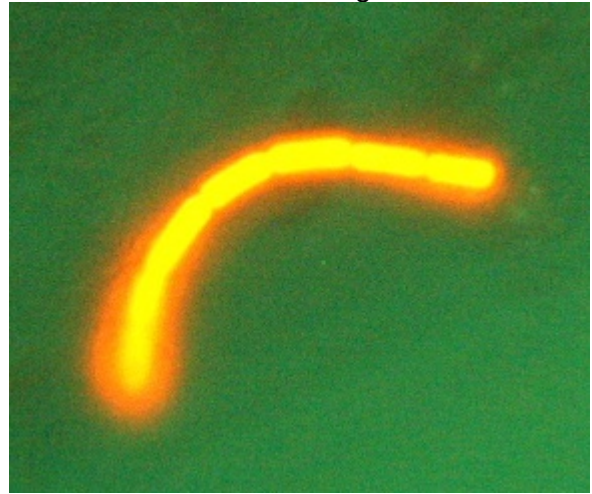
**Cultured mouse erythroid precursor cells**  
600x mag



Cell size:

10µm

**A string of large rod-shaped bacteria**  
1000x mag



Cell size:

Number of bacteria  
in the chain:

10µm

**Banana cell with starch granules (unstained)**  
100x mag



Cell size:

50µm

Starch granule size:

**Geranium leaf epidermis with stomata**  
400x mag



Epidermal cell:

Stomata – guard cell:

20µm

**Download this page and place in your notebook.**