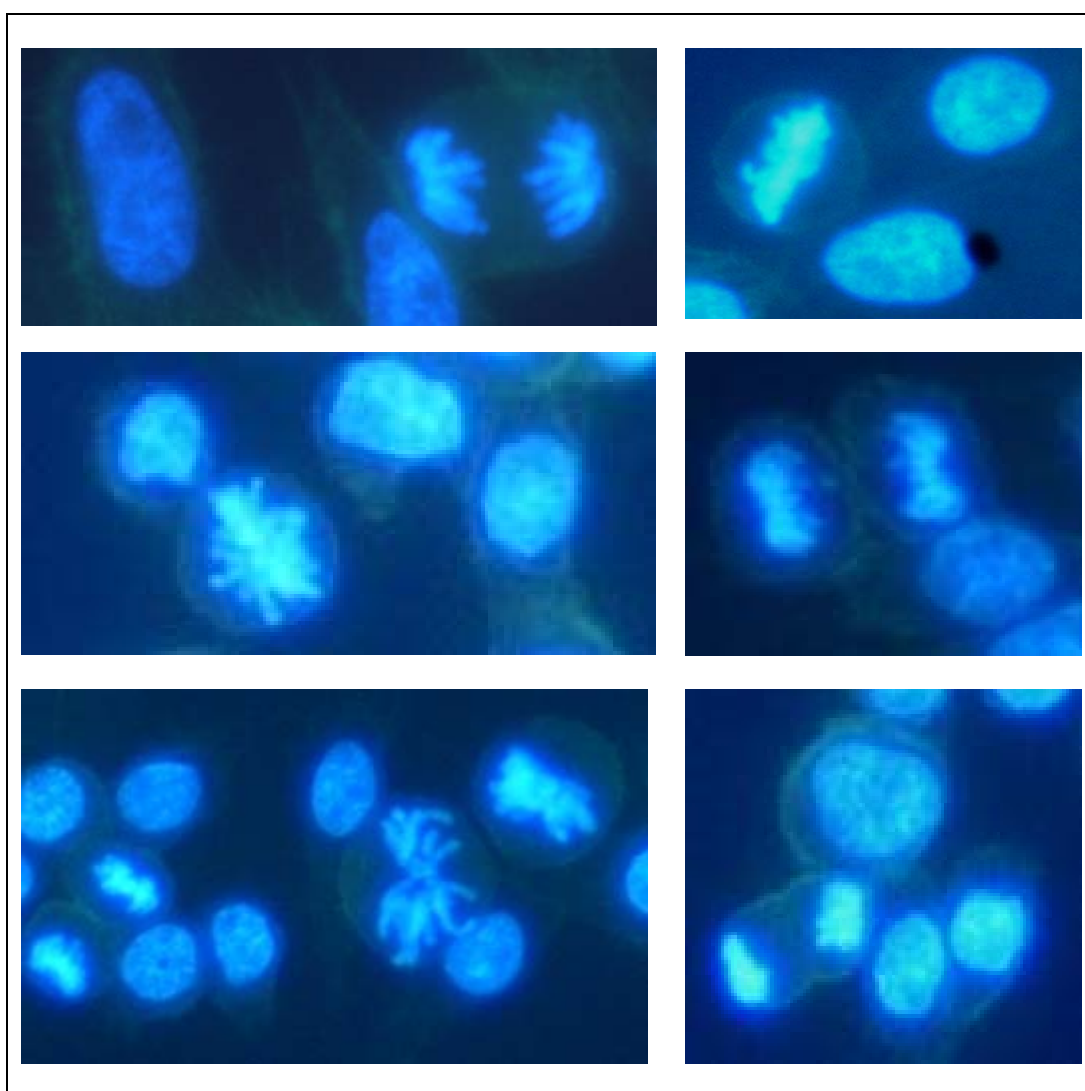
	<h1>CELLS ONLINE WORKSHEET</h1>
TOPIC	CELL CYCLE

Eukaryotic cells go through a 'cell cycle' with discrete times for metabolic activity and chromosome replication (**Interphase**), chromosome alignment and separation (**Mitosis**) and finally cell division into daughter cells (**Cytokinesis**). The phases of mitosis, which can be recognised by the arrangement of the chromosomes, are **Prophase, Metaphase, Anaphase and Telophase**. The photos below are of animal cells growing in tissue culture. The cells were stained with a fluorescent dye that binds to DNA and viewed with a fluorescence microscope.



Download this page, place in your notebook and answer the following questions.

Q1: For each image, identify the various phases of mitosis and give a reason for your choice.

Q2: Mitosis is only one part of the cell cycle. Research the other phases of the cell cycle and find out how long a cell spends in each of the phases.